

LED NUCLEAR POOL LIGHT

The HP-LED 100 is our leading edge nuclear LED pool light with up to 110,000 lumens illumination. It features a 35 meter depth rating, 90-240 VAC power and stainless steel housing. The light head is 100% field serviceable with replacement arrays. The HP-LED has a 1-year warranty.

Light type	Ultra high-intensity LED
Output¹	Up to 110 k lumens
Center intensity	Up to 30 k lux
Color temperature	5,700 K
Voltage	90-240VAC, 50-60 Hz
Power¹	1 kW MAX
Beam angle (half intensity) ¹	120°
Lifetime	18,000 hr to 70% of original light output
Depth rating	35m (100 ft) max
Housing material	304 stainless steel
Window material	Acrylic
Light head size¹	12.4 x 12.4x 1.5 inches without connector
Power supply size¹	16 x 10 x 4 in
Connectors	MCBH series-stainless steel
Weight (air) ¹	Light head: 12.5 lb (5.7 kg), power supply: 24.9 lb (11.3 kg)
Weight (water)	Light head: 7.1 lb (3.2 kg), power supply: 12.6 lb (5.7 kg)
Operating temp	-10°C to 50°C (122°F) in water
Radiation tolerance	1.5 x 10 ⁶ Rads (total accumulated)

1. Numbers typical and depend on configuration



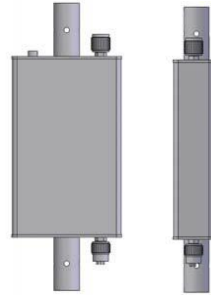
5618 Copley Drive, San Diego, CA 92111
858.565.8500 | www.rosys.com | sales@rosys.com

Specifications subject to change without notice

HP-LED 100 POOL LIGHT

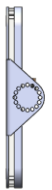
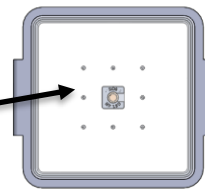
Complete system includes:

- LED light head
(304 stainless housing, acrylic window)
- Power supply
(304 stainless housing)
- 25 ft power cable
(power supply to electrical outlet)
- 6.5 ft light cable
(light head to power supply)
- Pole 15 ft with T-bar lift bail and yoke bracket
(304 stainless, uses existing HPS/HPLED mounting bracket. adjustable light head tilt angle)

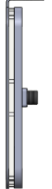
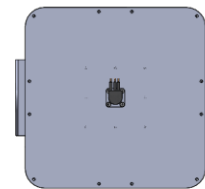


Power supply

Light head field serviceable
Using standard tools
Replaceable LED Array



Pool light can be customized by
ROS to fit customer requirements



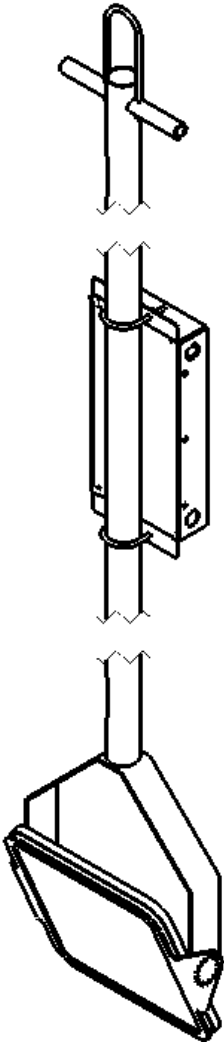
LED light head

Optional parts and systems:

- 125 ft power cable
- Custom wall mounting brackets
- contact ROS Sales
- Custom pole lengths
- contact ROS Sales

HP Assembly

System length (typ.): 18 ft
System weight (air): 60 lb (approx.)
System weight (water): 37 lb (approx.)



*SS= Stainless steel



5618 Copley Drive, San Diego, CA 92111
858.565.8500 | www.rosys.com | sales@rosys.com

Specifications subject to change without notice – updated 9/22/17, Rev E